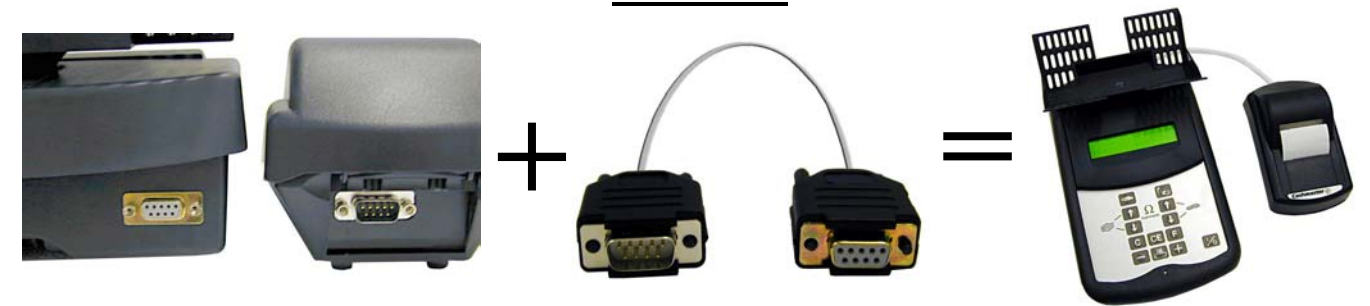


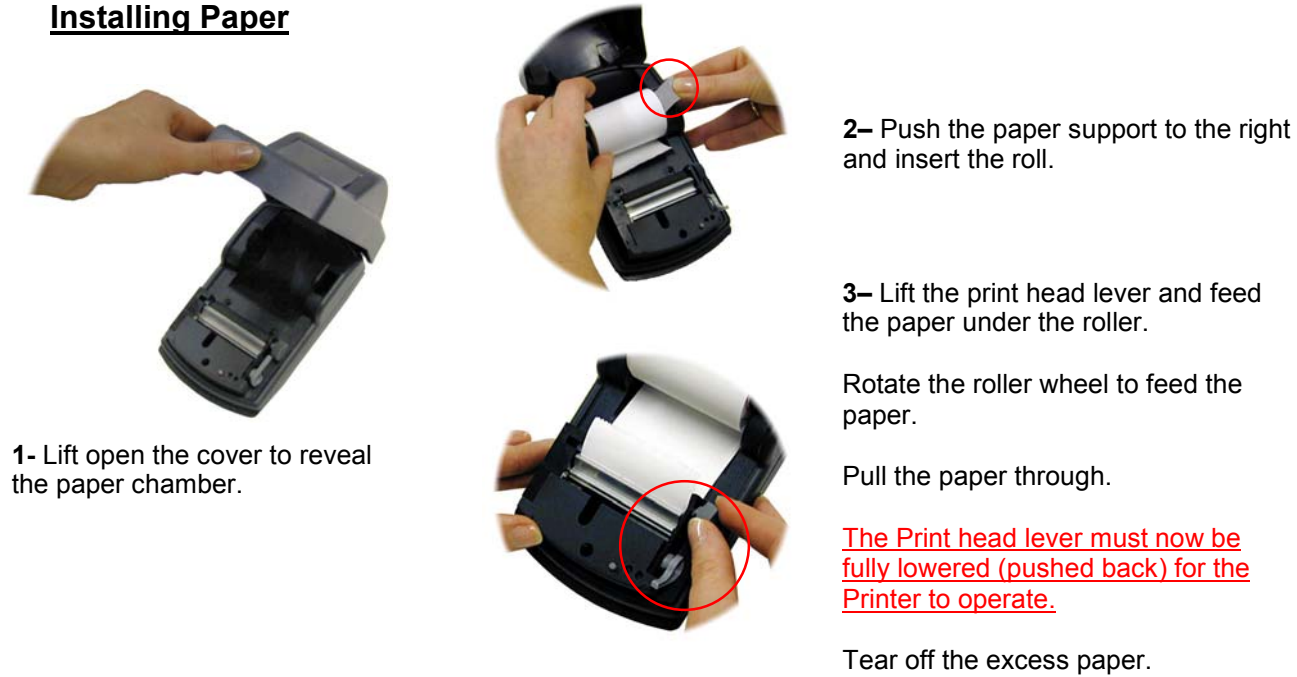
Connection



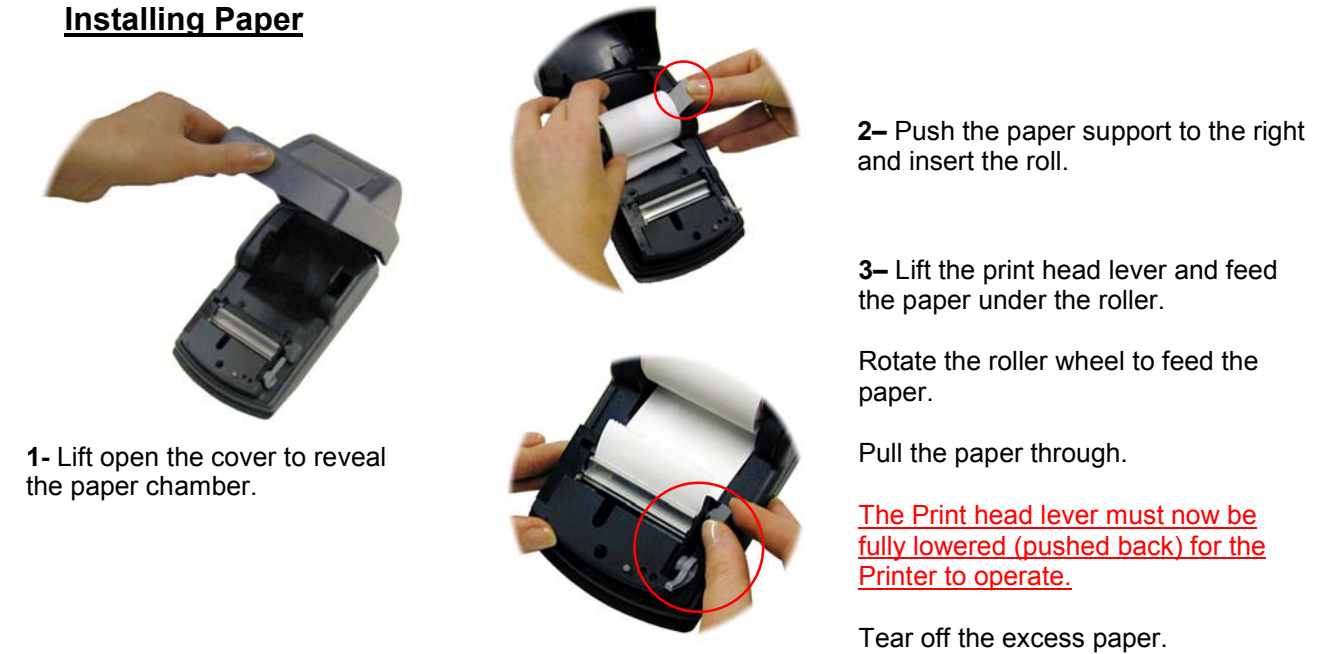
Connection



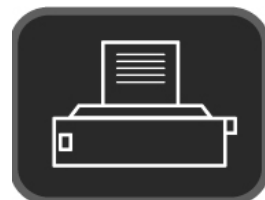
Installing Paper



Installing Paper



Operation



“Print” Key
To print, press the “Print” key on the cash scale.
(Actual key may differ from that shown above)



CP1 Paper Feed Path
Also shown inside printer top cover.



CP1 “Feed” Key
Pressing this button on the CP1 will feed the paper through.

Operation



“Print” Key
To print, press the “Print” key on the cash scale.
(Actual key may differ from that shown above)



CP1 Paper Feed Path
Also shown inside printer top cover.



CP1 “Feed” Key
Pressing this button on the CP1 will feed the paper through.